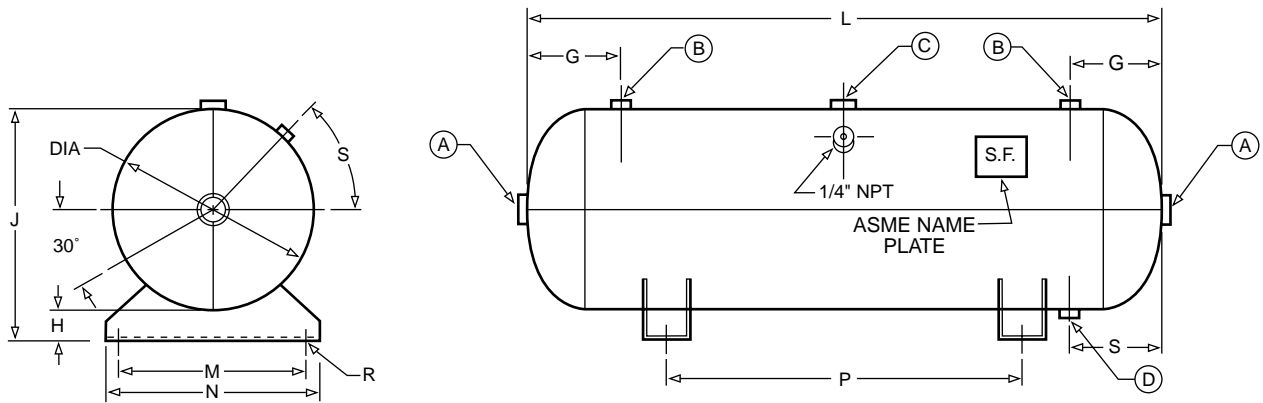
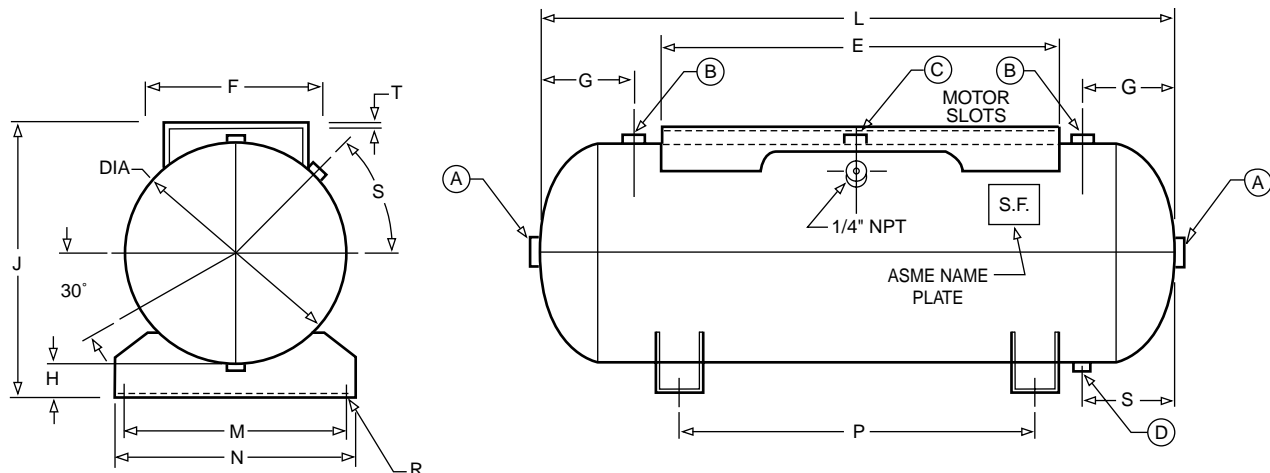


HORIZONTAL AIR RECEIVERS WITH FEET ONLY



P/N	GAL	DIA	L	OPENINGS (NPT) "				DIMENSIONS "										
				A	B	C	D	E	F	G	H	J	T	M	N	P	R	S
A10023*	12	12	27	3/4	1/2	1/2	1/4	-	-	5-1/2	1-3/16	13-3/16	-	11	12	14	1/2	5-1/2
A10025*	20	14	33	1-1/2	1/2	1/2	1/4	-	-	6	2	16	-	14	15-1/2	18	1/2	6
A10027	30	16	38	1-1/2	1/2	3/4	1/4	-	-	6	2-1/2	18-1/2	-	15	19	18	9/16x1	6
A10029	60	20	48	2	3/4	1	1/2	-	-	7-3/4	3-3/16	23-3/16	-	18-3/4	21	26	9/16x1	7-1/4
A10031	80	20	63	2	1	1-1/2	3/4	-	-	9	3-3/16	23-3/16	-	18-3/4	21	36	9/16x1	9
A10033	120	24	69	2	1-1/2	1-1/2	3/4	-	-	10	3-1/2	27-1/2	-	23-3/4	26-1/2	42	9/16x1	9
A10035	200	30	72	2	2	2	1	-	-	12	4	34	-	27-1/2	30	42	9/16x1	10-1/4
A10037	240	30	84	2	2	2	1	-	-	12	4	34	-	27-1/2	30	54	9/16x1	10-5/8

HORIZONTAL AIR RECEIVERS WITH FEET AND TOPPLATE



P/N	GAL	DIA	L	OPENINGS (NPT) "				DIMENSIONS "										
				A	B	C	D	E	F	G	H	J	T	M	N	P	R	S
A10024*	12	12	27	3/4	1/2	1/2	1/4	15	9	5-1/2	1-3/16	14-5/8	3/16	11	12	14	1/2	5-1/2
A10026*	20	14	33	1-1/2	1/2	1/2	1/4	19	10	6	2	17-1/2	3/16	14	15 1/2	18	1/2	6
A10028	30	16	38	1-1/2	1/2	3/4	1/4	24	12	6	2-1/2	20	3/16	15	19	18	9/16x1	6
A10030	60	20	48	2	3/4	1	1/2	30	14	7-3/4	3-3/16	24-3/4	3/16	18-3/4	21	26	9/16x1	7-1/4
A10032	80	20	63	2	1	1-1/2	3/4	36	14	9	3-3/16	24-3/4	3/16	18-3/4	21	36	9/16x1	9
A10034	120	24	69	2	1-1/2	1-1/2	3/4	44	16	10	3-1/2	29-1/4	1/4	23-3/4	26-1/2	42	9/16x1	9
A10036	200	30	72	2	2	2	1	44	18	12	4	35-13/16	1/4	27-1/2	30	42	9/16x1	10-1/4
A10038	240	30	84	2	2	2	1	48	18	12	4	35-13/16	1/4	27-1/2	30	54	9/16x1	10-5/8

*12 and 20 Gal. receivers have 4 pressed steel feet. All others have channel as shown.

Note: Receivers listed above are available without feet and topplate (slick receivers).

• All volume capacities listed in this brochure are U.S. gallons. • All dimensions listed in this brochure are subject to change without notice. For installation dimensions consult factory.